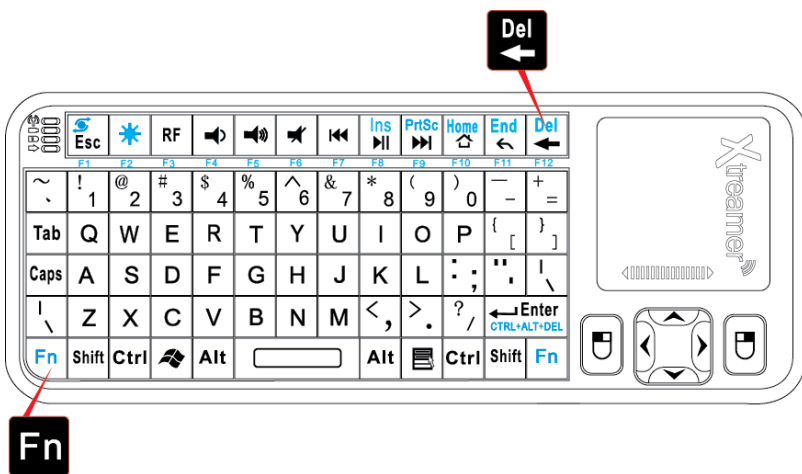
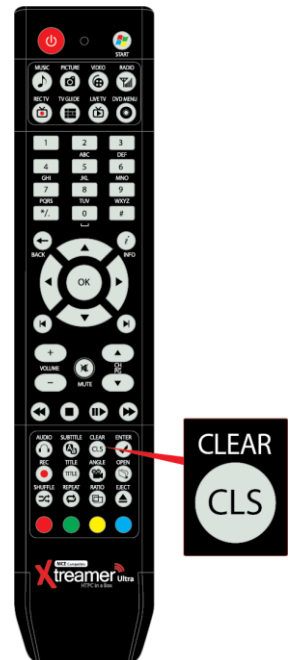


Guide to Xtreamer Ultra BIOS

1. You can enter Xtreamer Ultra BIOS using remote control or mini keyboard.
Turn the Ultra ON (power button on the remote) and then press **CLS**(Clear) or **Fn + DEL** buttons repeatedly before the intro screen disappears.

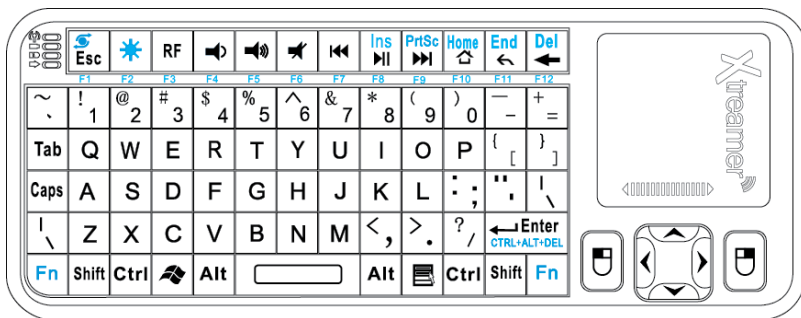
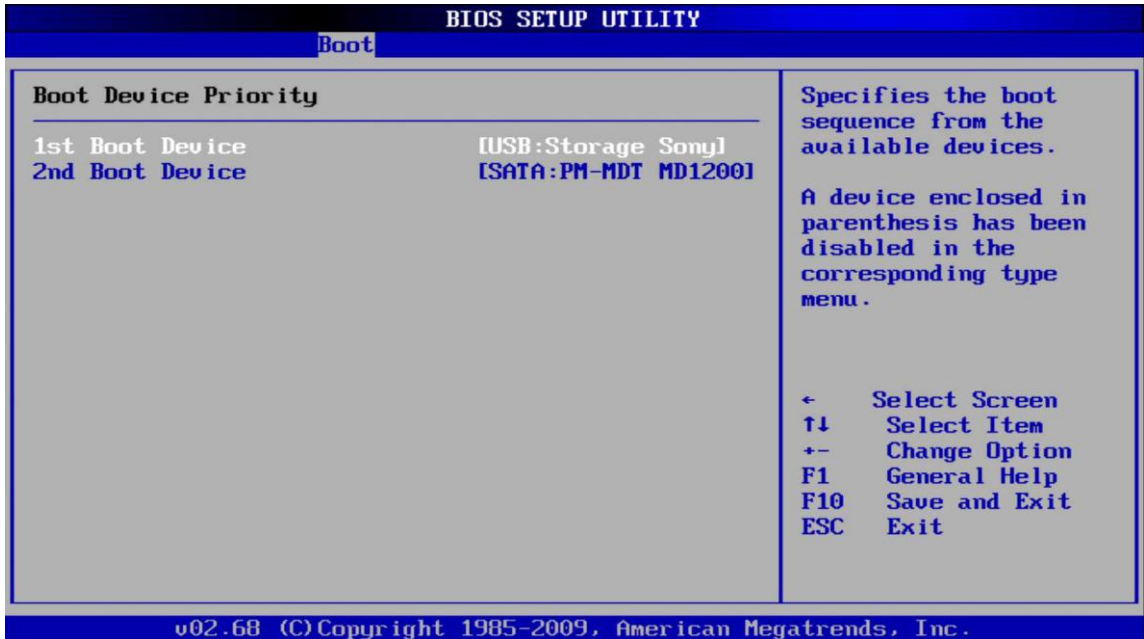


[Mini Keyboard]

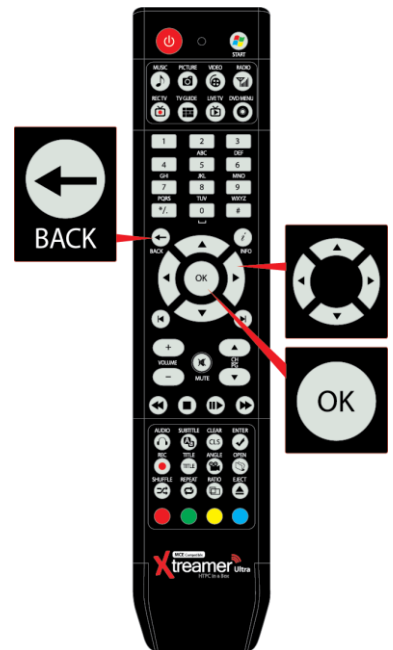


[Remote Control]

2. Once you enter the BIOS screen, simply use buttons to navigate (see below).



[Mini Keyboard]



[Remote Control]